



Inside this issue:

BHNRYS	1
Schedule of Events, CCCD & NRCS staff, Private Water Well Testing	2
Meet Clay, Tree Sales	3
Donkey Creek Watershed Cost Share	4
CCCD Happenings	5
4th Grade Trees, Board Member Election	6
Ventenata and Medusahead Update	7
Web Soil Survey #4	8
Ag and Natural Resources Expo	9
Livestock Water Storage Tanks, CC Fair, CC Weed and Pest	10
Community Advisory Meeting	11
Ranching for Profit Workshop	12

“Conservation: We’re All In”

By Anita Bartlett, Powder River Conservation District

Area youth gathered once again at Mallo Camp north of Newcastle, WY to participate in the Black Hills Natural Resource Youth Camp, June 13-15th. The purpose of this camp is to give youth the opportunity to experience a wide variety of activities and educational sessions teaching them about the natural world and its resources. Other activities included fishing, the Wildman Hike teaches kids about predators and prey relationships, a talent show, and various games.

Each child participated in six educational sessions they included: “Survival of the Fittest”, “Migration Mayhem”, “Tremendous Trees”, “and Casting for Food”, “Wilderness Scavenger Hunt”, and “Target Practice”.

“Migration Mayhem”, presented by Lacey Sloan with the Weston County Natural Resource District taught campers about why animals migrate, how they migrate, and the importance migration is to animals.

Jessie Halverson, with Project Learning Tree presented “Tremendous Trees” where campers learned about the parts of the tree and what trees need to survive.

In the session “Survival of the Fittest” Nate Fulton explained to the youth the importance of being able to survive in the wilderness if you get lost. He showed the kids the items he carries in his day pack and why each item is important. Nate sent home a few survival items with the kids to place in their own day packs.

John Marshall taught campers all about “Casting for Food”. This activity taught campers how to cast, fish, and properly care for caught fish. Campers were allowed to practice their casting skills and catch fish.

“Wilderness Scavenger Hunt” presented by Brandon Elkins with the WY NRCS, had the kids search nature for items related to animals and their habitats. Items the kids found included a woodpecker hole, bird nest, items animals would eat (seeds, insects, berries), and other animal homes.

Finally, Bob Pollo and Steve Miller had “Target Practice”. They taught youth the correct way to shoot a bow and arrow, safety while shooting and let the kids do a little “target practice”.

Sponsors for the Black Hills Natural Resource Youth Camp were the Campbell County Conservation District, the Powder River Conservation District and the Weston County Natural Resource District.



Nate Fulton teaching a survival lesson.

BOARD OF SUPERVISORS

BJ CLARK (307) 689-5471
Chairman, At-Large Member

BOB MAUL 682-3186
Vice Chair, Rural Member

ACACIA ELKINS 660-5265
Secretary/Treasurer, Urban Member

LINDSAY WOOD (307) 670-0171
Supervisor, Rural Member

JAIME TARVER 680-9715
Supervisor, Rural Member

BRENDA SCHLADWEILER 682-3810
Associate Board Member

ROBERT BRUG 674-2525
Associate Board Member

OFFICE STAFF

JENNIFER HINKHOUSE District Manager

DEBBIE HEPP Program Assistant

CLAY WOOD Water/Range Technician

CRYSTAL KELLEBREW Education Coordinator

Phone: 682-1824 Fax: 682-3813

E-mail: icd@vcn.com

Website: www.cccdwy.net

Hours: 7:00 AM—4:00 PM

Monday—Friday

The USDA is an equal opportunity provider and employer.

NRCS FIELD OFFICE

Phone: (307) 682-8843 Ext. 3
601 4J Court, Suite C

DISTRICT CONSERVATIONIST:

Tim Kellogg

RANGELAND MANAGEMENT SPECIALIST:

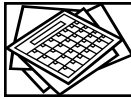
Brandon Elkins

PRIVATE LANDS WILDLIFE BIOLOGIST:

Lauren Connell

ULTIMA ADMINISTRATIVE ASSISTANT:

Shelby Atwood



SCHEDULE OF EVENTS

August 1-5, 2018	Campbell County Fair
August 14, 2018	CCCD Board Meeting
August 15-18, 2018	Wyoming State Fair
September 3, 2018	Labor Day - office closed
September 11, 2018	CCCD Board Meeting
September 12, 2018	Ranching for Profit Workshop
September 17-19, 2018	Pacific and Southwest Regional meeting in Washington
September 18, 2018	Area I Meeting in Crook County
October 8, 2018	Columbus Day - office closed
October 9, 2018	CCCD Board Meeting

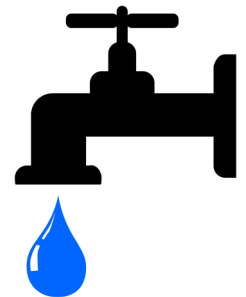
This newsletter is brought to you by:



PRIVATE WATER WELL TESTING

If your family gets drinking water from a private well:

- ◆ Do you know if your water is safe to drink?
- ◆ What health risks could you and your family face?
- ◆ Where can you go for help or advice?



The Wyoming Public Health Laboratory (WPHL) offers EPA certified water testing services for Total Coliforms and *E. coli*. WPHL is able to provide the water testing and reporting needs of the rural homeowners that would like to test their domestic wells. For routine testing, the \$8 cost is incurred by the land-owner. To receive the kit and instructions, call WPHL at (307) 777-7431. More information can be found at <https://health.wyo.gov/publichealth/lab/water> or <https://www.epa.gov/privatewells/drinking-water-household-wells>.



2018 CCCD Tree Sale

Another great year for tree sales! Thanks to everyone the CCCD sold 3861 trees this year. The top selling species were:

Conifer =	Colorado Blue Spruce - 670
Deciduous =	Cottonwood - 875
Shrub =	Chokecherry - 275

We also sold 29 rolls of weed barrier and 176 tree protectors.

Look for the 2019 Seedling Tree Order form in the next newsletter to come out in November 2018. It will also be available on our website www.cccdwy.net in November.

Thank you!

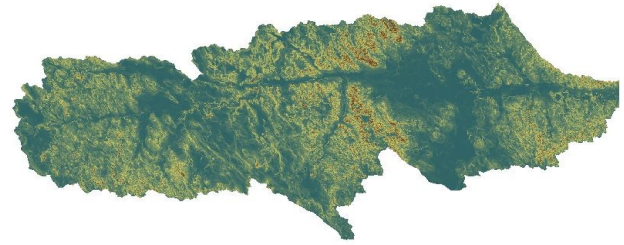
Clay Wood

New CCCD Water/Range Technician

Clay Wood grew up on his family ranch located outside of Sundance, Wyoming near Devils Tower, where his appreciation for natural resources began. Following high school he attended the University of Wyoming and graduated with a bachelor's degree in Rangeland Ecology and Watershed Management. He then worked for a private consulting firm in Gillette, Wyoming working on various projects ranging from mine reclamation to grazing management plans. Clay is very active within the Society for Range Management and is currently the president-elect for the Wyoming Section. He has also been involved in numerous boards and working groups throughout the state. In 2015, Clay returned to the University of Wyoming to pursue a master's degree in Plant Sciences with emphasis in Weed Science. His desire is to gain a better understanding of invasive species, their effects on rangelands, and improved control measures. He recently graduated with his master's degree and has joined the Campbell County Conservation District team as the Water/Range Technician where he will conduct water sampling, develop partnerships to improve water quality, assist with development of watershed plans, and timber stand improvement projects. Clay is looking forward to this opportunity and believes that this will be a great position to continue and further develop the important conservation and management practices that the district has already established.



Donkey Creek Watershed



Cost-Share Program Opportunity

Through Federal and State grants, the Campbell County Conservation District and the Donkey Creek Watershed Steering Committee are offering financial assistance for projects that will benefit water quality.



Funding Overview

Typical projects may include installing fencing/ stock water to minimize access to waterbodies, relocating corrals or animal feeding areas away from surface water, or replacing septic systems to eliminate sewage discharges. The amount of cost share available for each project varies. Projects ranked as high priority may receive up to 70% funding. If you think you would like to apply for cost-share funds through the District's water quality improvement program, you are highly encouraged to see if you are qualified.

Application Information

Applications will continue to be accepted and reviewed based on fund availability. The District staff is available to answer any questions or provide technical assistance regarding potential projects or the application process. Applications are available at the District office or you can download a copy from our website www.cccdwy.net.

Step One: Self Assessment/

Completed by the landowner. You may download one off the CCCD website (cccdwy.net) or call the office and have one mailed to you.

Step Two: Site Visit/Ranking

Completed by CCCD staff along with the landowner to evaluate resource concerns. CCCD will use ranking sheets to determine priority and eligibility

Step Three: Contract/Budget Development

- Grant/ SHPO Authorization (Up to 60 days)
- Permits
- Cost estimates

Step Four: Approval

Contract must be signed by the landowner prior to Watershed Committee and Board approval **AND** must include all documentation required in Step Three.

Step Five: Construction

Construction can begin following an **APPROVED** and **SIGNED** contract and budget. The Board **WILL NOT** make payments on any contract items constructed prior to an approved contract.

Step Six: As Built Payment

CCCD staff conduct site visit to validate construction elements and take pictures. Landowner submits all receipts to CCCD for payment which may take up to 90 days.

MAY

- Crystal provided the Water Cycle activity for 58 2nd grade students at Paintbrush on May 1.
- May 3rd, 3761 seedling trees were handed out to customers.
- Water monitoring began on Donkey Creek and was performed on May 3, 14, and 24.
- Water monitoring began on Little Powder River and was performed on May 7, 17, and 31.
- All staff attended the board meeting on May 8.
- The Great Migration, Scat and Tracks, and Fundana Bandanas entertained 60 1st grade students with Crystal at Lakeview on May 14.
- Jennifer and Debbie participated in the interviews held on May 15 and 16 for the Water/Range Technician position.
- Debbie attended the 2nd Hazard Mitigation Planning Team meeting on May 18.
- May 18, the Enviroscape activity was provided for 175 first, second, and third grade students at Pronghorn by Crystal.
- Jennifer, Debbie, Clay, and Tim attended the Little Powder River Watershed meeting on May 22.
- The deep potted cottonwoods were inspected at Spotted Horse on May 23 by Jennifer and Debbie.

JUNE

- Water monitoring continues on Donkey Creek/Stonepile Creek on June 4, 14, and 25.
- Water monitoring continues on Little Powder River on June 11, and 21.
- Bob Maul attended the WACD summer meeting June 5 and 6 in Douglas.
- All staff attended the Board meeting June 12.
- As Camp Director of the Black Hills Natural Resource Youth Camp, Crystal and volunteers educated 97– 9 to 13 year old campers June 13-15.
- Clay and Tim participated in the Ventenata-Medusahead Tour in Sheridan on June 19.
- June 19, Jennifer and Debbie attended the Little Powder River Watershed meeting.
- A special board meeting was held June 25 to approve year end expenditures.
- June 26, Jennifer and Clay were in the field inspecting the new Timber Stand Improvement areas.
- Crystal created solar ovens with the 17 attending the Lakeview summer program on June 28.
- June 29, Clay and Crystal were in the field inspecting new Timber Stand Improvement areas.

JULY

- Water monitoring continues on Little Powder River on July 2, 12, and 23.
- Water monitoring continues on Donkey Creek/Stonepile Creek on July 5, 16, and 26.
- Jennifer and Clay were in the field inspecting Timber Stand Improvements areas on July 6, 10, 18, and 25.
- All staff attended the Board meeting July 10.
- July 12, Crystal provided the educational activity, "Who lives in a tree?" with 19 attending the Lakeview summer program.
- Jaime and Jennifer attended the NRCS State Technical meeting to be held in Casper on July 17.
- Crystal educated 55 with "A Cloud in a Cup", water cycle activity at the Wright Library on July 18.
- On July 19, Jennifer and Clay attended the Little Powder River Watershed meeting.
- Area cover crop fields were visited by the staff, Tim Kellogg and Marlon Winger, NRCS on July 24.
- July 25, Crystal will be providing a Pollinator educational activity for those attending the Lakeview summer program.
- July 31, Jennifer plans to attend a Prairie Dog meeting with the Thunder Basin Grasslands Prairie Ecosystems Association in the morning and a Prairie Dog meeting initiated by Wyoming Department of Ag in the afternoon in Douglas.



4th Grade Free Seedling Tree Program

A **Campbell County Parks and Rec Department 1% grant** has sponsored a seedling tree for every 4th grade student in Campbell County in 2018.

A total of 570 Colorado Blue Spruce seedling trees were purchased for distribution to students in 16 schools. Crystal provided 22 presentations on tree education activities to 678 4th grade students. A total of 510 students were able to take home a tree for planting. The remaining trees

were planted at the Gillette Waste Water Treatment Plant.

Our goal is to educate the youth of Campbell County to ensure the next generation will be wise stewards of America's natural resources. The project also helps youth develop citizenship values and respect for the environment.

ARE YOU INTERESTED IN BECOMING A CCCD BOARD MEMBER?

A 5 member Board of Supervisors governs the Campbell County Conservation District. One Rural, one Urban, and one At-Large position will be open in November. Please call the CCCD at 682-1824 for more information!

Filing deadline is August 8-27!

DUTIES OF A BOARD MEMBER

- ⇒ Work with local organizations, the Natural Resources Conservation Service, and other state and federal agency personnel to develop and implement the local conservation district programs
- ⇒ Attend 12 regularly scheduled board meetings per year, attend special meetings as needed
- ⇒ Attend annual Area I meeting, attend Wyoming Association of Conservation Districts annual meeting
- ⇒ Attend other functions as needed to develop an effective natural resource conservation program
- ⇒ Work with the people in the district to promote their efforts toward responsible natural resource management

MISSION STATEMENT

To provide leadership for the conservation of Campbell County's soils and water, protect the agriculture resource base, promote the control of soil erosion, promote and protect the quality and quantity of Campbell County's water and all other natural resources, preserve and enhance wildlife habitat, protect the tax base and promote the health, safety, and general welfare of the citizens of this county through a "responsible conservation ethic".

COMPENSATION

District Supervisors are volunteers - Make a difference in your community today!



Ventenata and Medusahead Update

By Clay Wood, Water/Range Technician



The Northeast Wyoming Invasive Grasses Working Group (NEWIGWG) was formed in the fall of 2016 in response to the discovery of these two new invasive species in northeast Wyoming. Partners within NEWIGWG consist of federal, state, and local government agencies as well as private land owners and other interested organizations. The primary objectives of the group are: 1) clearly understand the distribution and potential for spread of these species, 2) develop and implement landscape-scale management strategies, 3) facilitate data sharing to enhance management, and 4) increase awareness around Medusahead and Ventenata with land managers and communities. Within the first full year that NEWIGWG has existed, the following activities have occurred:

- Intensively surveyed >22,000 acres and informally surveyed approximately 5,000 acres for Medusahead and Ventenata in 2016 and 2017
- Developed and distributed fact sheets and identification guides to more than 3,000 contacts
- Held local landowner “town hall” meetings to share information about Medusahead and Ventenata
- Hosted a field tour for approximately 100 participants from 6 states in 2017
- Adaptively adjusted known distribution limits for both species as new reports are confirmed
- Chemically treated all known Medusahead acres in October 2017 (more acreage was identified following herbicide treatments)
- Hosted a field tour for approximately 150 participants in 2018

Total acreage of Ventenata distribution (as determined by connecting known Ventenata locations as an outer boundary) approaches 2 million acres, actual infested acreage is expected to be dramatically less. Medusahead infested acreage is less than 200 acres, so NEWIGWG focused control efforts in these areas to target eradication of Medusahead from the region. Management approaches may change as additional information becomes available and more locations of these species are confirmed. NEWIGWG partners are implementing innovative methods to predict areas with a high likelihood of invasion by determining vector pathways analysis and estimated habitat suitability to provide priority areas for future surveys. Moving forward, NEWIGWG will continue with survey efforts to gain a better understanding of distribution for both species which will direct management efforts. The current treatment strategy is to use herbicides over multiple years to attempt to eradicate Medusahead and limit the spread of Ventenata into new areas. Priorities for treatments will be considered based on local needs, impacts to livestock forage, risk of fire to mitigation corridors and infrastructure, and wildlife habitat. For more information about NEWIGWG visit: <https://www.scweeds.com/newigwg>.

For identification or if you think you might have Ventenata or Medusahead on your property, please contact Clay Wood, CCCD Water/Range Technician at 307 682-1824 or your local Weed and Pest office.

Web Soil Survey

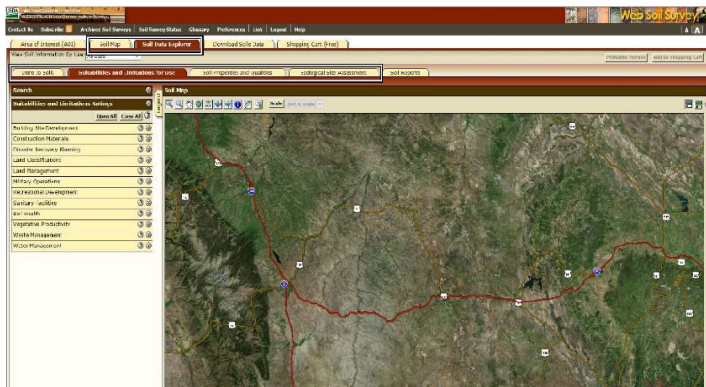
A Users Guide Series

this issue...

- Soil Map Tab
- Soil Data Explorer Tab

Future Articles in this Series...

- Soils Report & Shopping Cart Tabs



Second Step in Using WSS Soil Map & Soil Data Explorer

In this 4th installment we will be picking up where we left off working in Web Soil Survey (WSS) with our Area of Interest (AOI). This is where we really get into the meat of the program and find out what you really want to know about your soils and maybe even something you never really thought about before but find interesting.

So, in case you have forgotten we have opened WSS and created our AOI using one of the methods described in the previous article. The second step in using Web Soil Survey is to look at the Soil Map for your area of interest. The soil map shows the soil map units in your AOI. The Map Unit Legend Summary table in the left column shows you the name and map symbol of each map unit, the percent of each map unit in the AOI, and the total acreage of each map unit in the AOI. For multi-part AOIs, each AOI part will be shown and the soil survey area(s) they intersect. You can display the map unit description for a single soil unit by clicking the soil unit name. The description will appear in a dialog, which has a Printable Version control. The Map Unit Descriptions report, containing descriptions of all soil map units in your AOI, is automatically added to your shopping cart for a Custom Soil Resource Report. To get a Printable Version of this report, navigate to the Soil Data Explorer tab's Soil Reports inner tab. Open the AOI Inventory folder, view the Map Unit Description report, and click Printable Version.

While using WSS, you may want to refer back to your soil map. You can do so on the screen by clicking the Soil Map tab, or you can print the soil map by clicking the Printable Version button. The default Soil Map, Map Unit Legend, and Map Unit Descriptions are automatically added to the Shopping Cart, but if you would like to change the layers on the map and give it a different name you can do so and click the Add to Shopping Cart button to customize the map in your report.

Next, we can move on to the Soil Data Explorer tab. This tab contains five inner tabs: Intro to Soils, Suitabilities and Limitations for Use, Soil Properties and Qualities, Ecological Site Assessment, and Soil Reports. The default inner tab is Suitabilities and Limitations for Use.

This tab along with the Soil Properties and Qualities tab includes various soil interpretations displayed as thematic maps with a summary table for the soil map units in the selected AOI. A single value or rating for each map unit is generated by aggregating the interpretive ratings of individual map unit components. Ratings are organized by category, such as "Building Site Development." Open a ratings category in the panel to the left, and select a rating, such as "Dwellings with Basements." To learn more about the rating, click View Description. In the View Options pane, select the items you want to view. To view or change the aggregation method or other advanced parameters, click Advanced Options. When ready, click View Rating to hopefully get the answers you're looking for. To learn more on these options and methods, the help buttons (?) are invaluable and not something you want to overlook, or you can use the first tab Intro to Soils, which contains mountains of information.

That leaves the Ecological Site Assessment tab. This tab includes ecological site descriptions, plant growth curves, state and transition models, and selected National Plants Database information. Individual soil map unit components can be correlated to a particular ecological site. The Dominant Ecological Site map is generated automatically when you click on the Ecological Site Assessment tab. It shows all the ecological sites in your AOI, aggregated by dominant condition. The Ecological Sites by Map Unit Component table lists the ecological sites assigned to map unit components in your AOI. To view ecological site data, select an ecological site in the panel to the left and select one of the numbered plant communities, or select This Ecological Site. In the View Options pane, select the items you want to view. Note that the options for This Ecological Site are not the same as those for an individual plant community. When ready, click View Plant Community Info if you selected an individual plant community, or View Ecological Site Info if you selected This Ecological Site.

COMING UP NEXT IN THE FINAL INSTALLMENT...

We will wrap up the remaining tabs in WSS along with explaining the difference between Printable and Add to Shopping Cart. I'll have a few more tips and tricks to help you better navigate WSS efficiently and effectively.



Article by: Brandon Elkins

Rangeland Management Specialist- Gillette NRCS



Governor Matt Mead visits the 2018 Agriculture and Natural Resources Expo!

The Campbell County Conservation District hosted the annual Ag and Natural Resources Expo on April 24, 2018 at the Cam-Plex, to raise awareness and understanding of Campbell County's agriculture and natural resources.

All activities were hands-on and in total 847, 3rd grade students from 18 public schools and 4 private schools were educated through this program. There were

30+ activities including roping the dummy, owl pellets, macro-invertebrate identification, weed and pest control, chicken, sheep, and cattle education and much more.

The Campbell County Conservation District is very grateful to the FFA members from the Gillette, Coal Country, and Wright chapters who volunteered all day!

Wright FFA Randal Haefele, FFA Advisor; Austin Seeley, Wyatt Real, Brandi Fuller, Kinlee Priewe, Garrett Strohschein, Cierra Nelson, and Garrett Steele

Gillette FFA Tyler Boller, Brandi Oedekoven, Shantell Gladson, Marty Choate, C'era Smith, Cody Acord, and KayCee Strohschein

Coal Country FFA Jenny Michaels, John Bozovich, Dawson McCuin, Brendan Cundall, Zoe Smith, Hayly Knighten, and Tristan Anderson

*Our sincere thanks to the following people and organizations
as the Expo could not have been possible without them!*

Sponsors:

Campbell County Commissioners
Campbell County Cattlewomen
Campbell County Conservation District
Campbell County Weed and Pest
Pinnacle Bank

BKS Environmental Associates, Inc.
Campbell County Farm Bureau
Anadarko
Powder River Energy

Exhibitors:

Campbell County Cattlewomen
Campbell County Weed and Pest
4-H Wool Judging Team Volunteers
WY Department of Environmental Quality
Campbell County Master Gardeners
Natural Resources Conservation Service
UW Cooperative Extension Service
Campbell County Conservation District
Gillette, Coal Country, and Wright FFA students
Bishop and Stephens Family

National Agricultural Statistics Service
Farm Service Agency
Audubon Rockies
Anadarko
Campbell County Farm Bureau
Predator Management Board
Wyoming Game and Fish
US Forest Service
Bird Conservancy of the Rockies
Bobbi and Myria Geis

LIVESTOCK WATER STORAGE TANKS FOR FIRE SUPPRESSION

By Tim Kellogg, NRCS

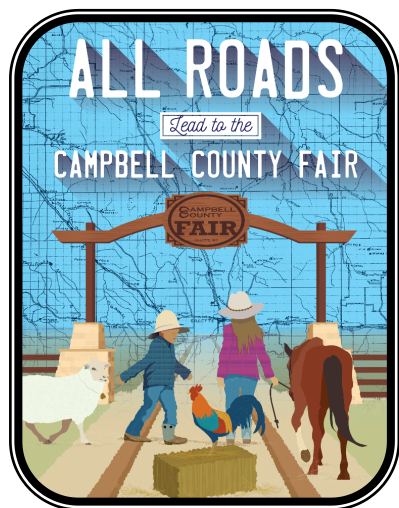
As we all enjoy the average to above average precipitation this year most of us are not thinking about wildfires in the county. But as it turns warmer and dryer later in the summer the occurrences of fires will increase. One of the challenges that our fire department faces, while battling wildfire, is easy access to water for their engines. Often the fire department must dispatch a water tender to a fire to supply the water needed for fire suppression. Depending on terrain the tender may be a few miles from the fire. This means more travel time to a water source and takes time and personnel away from the fire line.

This concern was identified as one of the many challenges facing firefighters in Campbell County at one of the Regional Hazard Mitigation meetings that were held this past spring. One of the solutions mentioned was to assist firefighters in identifying the locations of the livestock water storage tanks on the ranches around the county.

Dale Izatt, CCFD, and Tim Kellogg, NRCS, discussed this after the meeting and came up with a proposal: Landowners could voluntarily give the location of their storage tanks to CCFD and the Gillette NRCS field office to create a digital map layer for the fire department to use during fire season.

In order for NRCS to share the location of potential water resources with CCFD, each landowner would need to give NRCS signed written permission.

If you are interested in being part of this voluntary effort or have questions, please contact Tim Kellogg at the Gillette NRCS field office located 601 4J Court, Suite C or call 307-696-4446.



Come visit us at the 2018

Campbell County Fair!

August 1 - August 5

The CCCD staff will be at the trade fair at the Cam-Plex during the Fair.

Stop by to visit and receive a free copy of "Plants with Altitude" and "Promoting Pollinators on your Place".

CCCD will also be providing a youth activity!



Campbell County Weed and Pest Small Acreage Program

This was the first year of the Small Acreage Program. The program target species were Dalmatian Toadflax, Whitetop, and Knapweed. The crew treated about 100 acres of Dalmatian Toadflax, 40 acres of Whitetop, and 70 acres of Knapweed during the summer season.

If you have any of these species on your property and would like to enroll in this program, please contact the Weed and Pest office at 682-4369.

NRCS Community Advisory Committee
By Jennifer Hinkhouse, District Manager

On April 5th producers and agencies came together in Gillette to discuss conservation and Farm Bill programs that are administered by the Natural Resources Conservation Service (NRCS). This meeting included representation from Campbell, Crook and Weston Counties. Information on programs and the previous fiscal year were presented by the Area Resource Conservationist, Rusty Schwartz. In the last fiscal year this corner of the state received 209 applications for funding, or 3.5 million dollars in requests. Of that 18 applications had been approved for funding which was approximately \$866,642.00. After reviewing information from the last fiscal year the group had a discussion about the resource concerns of the tri-county area. The following is a prioritized list of the resource concerns:

Livestock production limitations

Degraded plant conditions

Soil quality degradation

Water quality degradation

Excessive/ insufficient water

Soil erosion

Inadequate habitat for fish and wildlife

Air Quality impacts

Inefficient Energy use

The advisory group had discussions on a variety of programs and their concerns over the way those programs were being administered. Their final recommendations went to the NRCS State Technical Advisory meeting, on July 17th. Jaime Tarver represented the area and brought forth the local recommendations. Those recommendations were discussed and actions were taken by the State Office of NRCS. Below are the recommendations and state actions.

Advisory Committee Recommendation: Placing a dollar cap on cover crop applications so that more landowners could participate. This would mean that producers wanting to enroll more acres than the cap amount would need to piece out their projects over time.

State NRCS Action: After reviewing the recommendations on cover crops program, the State Conservationist will be implementing program adjustment to implement a cap on cover crop applications in the future. The cap will be \$20,000 per year. This will allow for increased participation in the program, while eliminating the possibility of a single producer taking the entire allocation for an area.

Advisory Committee Recommendation: Livestock water development is a necessity for producers. There are concerns about geology reports and the ability of producers to drill wells within the current programs restrictions. The committee suggested placing a dollar cap on drilling so that if they need to drill deeper the producer can authorize that while the drilling company is on site.

State NRCS Action: The State Conservationist is working with the state program staff and geologist to remedy the challenges with water development. They are working on assessing the need for outside assistance on geology reports. This would help expedite the process as NRCS only has one geologist who is shared with other states.

Advisory Committee Recommendation: Concerns over producers being able to have the conservation practices that they implement on their property without federal financial assistance factored into their ranking for additional practices was discussed. Currently only the practices that were implemented through NRCS practices are considered.

State NRCS Action: The State Conservationist agreed that there should be a way for producers to have the conservation practices that they implement without assistance count towards their future applications. There are some developments nationally to create computer programs to track this information. The State will work with national headquarters to come up with a solution to address this in the future.

Advisory Committee Recommendation: Interpretation of the Migratory Bird Act within the State has imposed obstacles to completing forestry practices. This is especially true at high elevations where the seasonal restrictions in combination with snow cover have resulted in extremely small time frames to implement practices.

State NRCS Action: This challenge came up in several areas around the State. Migratory Bird Act is federal law, however interpretation of the law can vary. The conservation district will continue to work with the NRCS state office to find a solution in order to put good conservation on the ground.

Campbell County Conservation District
601 4J Court, Suite D
P.O. Box 2577
Gillette, WY 82717 - 2577



NP MKT ML
PERMIT NO. 70
Gillette, WY 82716

Phone: (307) 682-1824 Fax: (307) 682-3813 E-Mail: icd@vcn.com

RETURN SERVICE REQUESTED

RANCHING FOR PROFIT

WITH DAVE PRATT



12 SEPT | 9:00 – 3:30

Fire Training Center
701 Larch Street
Gillette, WY 82716

Topics are applicable to all livestock classes:

- **3 Secrets for Increasing Profit**
 - Economics vs. Finance
 - Show Me The Money
- **Cell Grazing**
 - 5 cell grazing principles that improve soil health, increase carrying capacity, and reduce costs

And more

\$25 early registration thru August 31st (\$30 after)
Workshop expected to SELL OUT. Don't delay!

To register contact Lauren Connell

Office: (307) 696-4453

Lauren.Connell@wy.usda.gov

Brought to you by



**The Campbell
County Cattlewomen**

