

Sediment and Erosion Management For Construction Sites



Sponsored by:



Thursday, March 25, 2010
Campbell County Public Library
2101 South 4J Road, Gillette
9:30 a.m. to 5:30 p.m.
Workshop Agenda

Clean Water Act: Fines and penalties

Review of Permit Requirements: EPA and Wyoming

Sediment Control Methods: Barriers, Sediment Containment Systems, Limitations

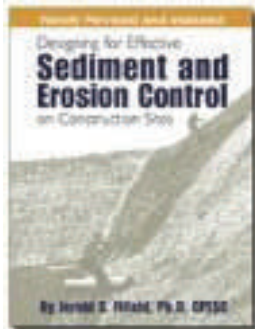
Erosion Control Methods: Diversions, Mulches, Vegetation, Limitations

Wind Erosion Control Methods: Particulate matter, Methods of transport, Causes of erosion, Methods to reduce erosion

Inspections: EPA consent order, Record keeping, Report writing, Construction site tour

WORKSHOP QUALIFIES ATTENDEE FOR 8 HOURS OF PDH CREDITS

**- Registration Fee \$75 Per Person -
Due by March 18th**



Textbook included
with registration

Presented by:



International Erosion Control Association

Registration form available at www.cccdwy.net

or contact:

Michelle Cook

Campbell County Conservation District

601 4J Court, Suite D

Gillette, WY 82716

Phone: (307) 682-1824 E-mail: icd@vcn.com



AGENDA

| | |
|--------------------|-----------------|
| 9:30 - 11:00 a.m. | Start Training |
| 11:00 - 11:15 a.m. | Break |
| 11:15 - 1:00 p.m. | Resume Training |
| 1:00 - 2:00 p.m. | Break for Lunch |
| 2:00 - 3:45 p.m. | Resume Training |
| 3:45 - 4:00 p.m. | Break |
| 4:00 - 5:30 p.m. | Resume Training |
| 5:30 p.m. | Finish |

The content will be consistent with the following outline:

Introduction

- Clean Water Act

 - Fines and penalties

- Review of Permit Requirements

 - EPA

 - Wyoming

Definitions

Sediment Control Methods

- Barriers

- Sediment Containment Systems

- Limitations

Erosion Control Methods

- Diversions

- Mulches

- Vegetation

- Limitations

Wind Erosion Control Methods

- Particulate matter

- Methods of transport

- Causes of erosion

- Methods to reduce erosion

Inspections

- EPA consent order

- Record keeping

- Report writing

Construction site tour

Sediment and Erosion Management For Construction Sites

SPONSORED BY:



Thursday, March 25, 2010
Campbell County Public Library
9:30 a.m. to 5:30 p.m.

PRESENTED BY:



REGISTRATION FORM

Seating is limited
Please register by Thursday, March 18, 2010

NAME: _____

COMPANY: _____

ADDRESS: _____

PHONE: _____

E-MAIL: _____

REGISTRATION FEE IS \$75.00 PER PERSON

Please make check payable to:
Campbell County Conservation District
PO Box 2577
Gillette, WY 82717
Phone: (307) 682-1824