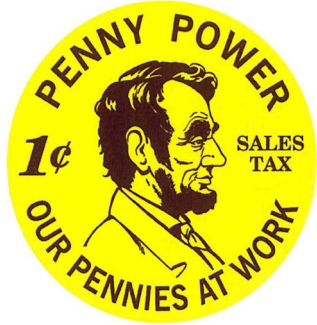


Quarterly  
Newsletter  
February  
2024



## CCCD's Pilot Rural Enhancement Project

CCCD is pleased to announce the completion of its first project funded under the newly-created Rural Enhancement Program.

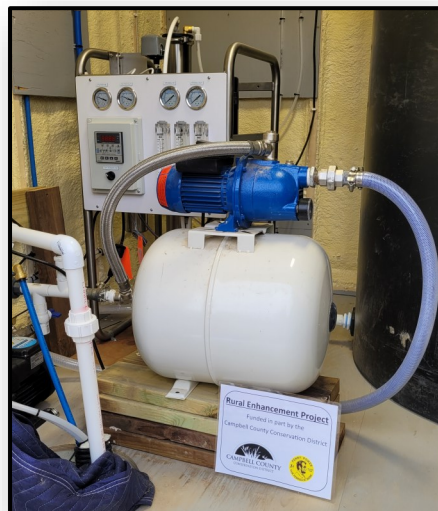
A Campbell County landowner was awarded funding to install a complete Reverse Osmosis (RO) system for a rural property development in Northern Campbell County. This will ensure a stable supply of safe drinking water for residents, as the current well did not meet EPA recommended potable water standards.

Funding support is provided from CCCD's Optional 1% Sales Tax allocation at a 50% project cost reimbursement. This program assists landowners, particularly those who may not be selected for Federal Farm Bill programs, in implementing natural resource conservation practices.

CCCD anticipates opening the application period for this program again in April/May.

### Inside this issue:

Rural Enhancement	1
CCCD Events	2
CCCD Soil Trailer	
CCCD Happenings	3
Upcoming Sampling Season	
Legislative Breakfast	4
WACD Convention	
Seedling Tree Sale	5
Seedling Tree Sale	6
Barnyards & Backyards	7
CCCD Items for Sale	
C.C. Weed & Pest	8
Well Water Testing Day	
Virtual Workshop	9
Stewardship Recognized	10
Stewardship Recognized	11
BHNRYC	12



**BOARD OF SUPERVISORS**

**BRANDON PRICE** (307) 257-0740  
 Chairman, Urban Member

**RICHARD HAUBER** (307) 682-5995  
 Vice Chair, Rural Member

**KIM KRETSCHMAN** (307) 736-2415  
 Secretary/Treasurer, At-Large Member

**JEFFREY BOARDMAN** (307) 669-1196  
 Supervisor, Rural Member

**JOHN DALY** (307) 682-5141  
 Supervisor, Rural Member

**BRENDA SCHLADWEILER** (307) 682-3810  
 Associate Board Member

**JAIME TARVER** (307) 680-9715  
 Associate Board Member

**OFFICE STAFF**

**CHEYENNE LOVE** District Manager

**CRYSTAL KELLEBREW** Education Coordinator

Phone: 682-1824 Fax: 682-3813

E-mail: [clove.cccd@gmail.com](mailto:clove.cccd@gmail.com)

Website: [www.cccdwy.net](http://www.cccdwy.net)

**Hours: 8:00 AM—4:00 PM**  
**Monday—Friday**

The USDA is an equal opportunity provider and employer.

**NRCS FIELD OFFICE**

Phone: (307) 682-8843 Ext. 3  
 601 4J Court, Suite C

**DISTRICT CONSERVATIONIST:**

Tim Kellogg

**RANGELAND MANAGEMENT SPECIALIST:**

Brandon Elkins

**SOIL CONSERVATIONIST:**

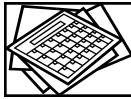
Rainn Lewis

**PRIVATE LANDS WILDLIFE BIOLOGIST:**

Harold Campbell

**FARM BILL SPECIALIST:**

Jessica Van Woerkom



**SCHEDULE OF EVENTS**

February 13, 2024 CCCD Board Meeting  
 February 19, 2024 Holiday, Office Closed  
 March 12, 2024 CCCD Board Meeting  
 March 12-14, 2024 WCDEA Training, Casper, WY  
 April 9, 2024 Holiday, Office Closed  
 April 29, 2024 Arbor Day Celebration, Cheyenne, WY

**CCCD Soil Trailer Beginning to “Put Down Roots”**

CCCD’s latest education project, the Soil Trailer, is continuing to take shape over the course of the Winter. Having been temporarily housed off-site for more conducive working conditions, CCCD Staff are completing internal design concepts and have been foaming, painting, and working hard so the project is ready to be presented at the 2024 Agriculture and Resources Expo in April.

This project will bring soil health education to both youth and adult audiences throughout Campbell County.



## November

- Staff attended the CCCD August Board Meeting on November 8.
- CCCD Office closed, November 10.
- November 14-17, CCCD Staff attended WACD State Convention in Dubois, WY.
- CCCD Office closed, November 23-24.
- Crystal attended the WCDEA Training Committee Conference Call on November 28.
- November 30, Cheyenne attended the virtual STAC Meeting.

## December

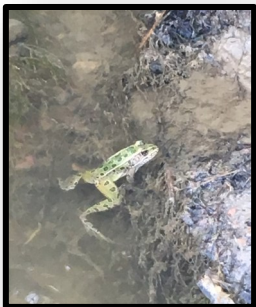
- Cheyenne conducted a Rural Enhancement Site Visit on December 4.
- CCCD hosted the Legislative Breakfast, all staff attended on December 5.
- Crystal attended the WCDEA Training Committee Conference Call on December 5.
- December 6-7, Cheyenne attended the WDEQ NPS Task Force Fall Meeting.
- All staff attended the CCCD Board Meeting on December 12.
- Crystal attended the WCDEA Training Committee Conference Call on December 12.
- CCCD Office closed December 25.

## January

- CCCD Office closed, January 1.
- Cheyenne attended the WCMT Meeting on January 4.
- Staff attended the CCCD Board Meeting on January 9.
- Crystal attended the WCDEA Training Committee Conference Call on January 9.
- CCCD Office closed, January 15.
- January 16, Crystal attended the PLT Steering Committee Conference Call.
- Crystal attended the WCDEA Training Committee Conference Call on January 16.
- January 30, Crystal attended the WCDEA Training Committee Conference Call.

## Preparations Begin for 2024 Water Quality Sampling Season

The Winter season is the perfect time to make preparations for the 2024 water quality sampling season. CCCD Staff have begun to purchase necessary supplies, update Sampling and Analysis Plans (SAPs), and contact participating landowners so sampling can begin as soon as weather conditions permit.



## Legislative Breakfast

CCCD Staff, Board Members, Campbell County Commissioners, City Council Members, and Wyoming Legislators met for their annual Legislative Meeting (Breakfast) on December 5<sup>th</sup>, 2023.

For over a decade, CCCD has invited Campbell County Senators, Representatives, and local elected officials to meet and discuss natural resource issues and provide an update on District activities prior to the upcoming Legislative Session. This ensures elected officials observe the relationship and role CCCD performs in natural resource and agriculture legislation. The following agenda items were reviewed;

- CCCD Budget FY24
- CCCD 2022 - 2023 Summary
- CCCD Annual Report FY23
- CCCD Annual Plan of Work FY24
- Water Quality Program
- Outreach & Education Program
- Legislative Issues



The 2024 Legislative Session begins February 12<sup>th</sup>, 2024.

## WACD Convention

CCCD Staff and Board of Supervisors Vice-Chair, Richard Hauber, attended the 78<sup>th</sup> Annual WACD Convention in Dubois from November 14<sup>th</sup> - 17<sup>th</sup>. While there, CCCD attended general sessions and a variety of committee meetings focused on specific areas of conservation district concern, including;

- District Operations & Education
- Water Resources
- Private, State and Federal Lands

CCCD also attended multiple social events, which allow for valuable discussion with other CDs across the State.

*CCCD would like to congratulate Crystal Kellebrew, Education Coordinator, for being awarded the 2023 Area I Employee Award! We appreciate Crystal's continued hard work and dedication to the District!*



# 2024 CCCD Seedling Tree Order Form

**Conditions of Sale**

Order No. \_\_\_\_\_

*This nursery stock must be used for conservation purposes. Plants purchased may not be resold as living plants and are intended to be used within Campbell County, WY. Payment must accompany order. Seedlings generally arrive at the beginning of May; however, due to shipping variability, pickup dates and times will not be set until CCCD receives shipping confirmation from the nursery. Please ensure your contact information is provided to ensure CCCD can notify you of pickup dates and times. Nursery inventory fluctuates throughout the season due to a variety of reasons outside of our control. Please keep substitutions in mind in the event that an item becomes unavailable. If a substitution is not available or desired, a refund can be issued. Plant materials are subject to countless variables that may impact their overall health and success. CCCD does not guarantee plant survival, and there is **no warranty** on purchased plant materials. **CCCD is not responsible for weed growth, plant death, or any factor affecting the longevity of stock.***

I have read and agree with the above "Conditions of Sale".

Signature \_\_\_\_\_ Date \_\_\_\_\_

Name (please print) \_\_\_\_\_ Mailing Address \_\_\_\_\_

City \_\_\_\_\_ State \_\_\_\_\_ Zip Code \_\_\_\_\_ Daytime phone: \_\_\_\_\_  
Evening phone: \_\_\_\_\_  
E-mail address: \_\_\_\_\_

Acres of ownership \_\_\_\_\_ County \_\_\_\_\_

How did you learn of the CCCD tree sale?  CCCD website  CCCD Facebook page  
 CCCD Newsletter  Other \_\_\_\_\_

**Send order form and check made payable to:**  
**Any questions call-**  
**(307) 682-1824**

**Campbell County Conservation District (CCCD)**  
**PO Box 2577**  
**Gillette, WY 82717**

**SHRUBS**

- CARAGANA:** medium to tall, does well on poor soils, excellent drought resistance, rapid growth rate
- CHOKECHERRY:** tall shrub, can be poisonous to livestock, rapid growth rate, prefers well drained soil
- COMMON LILAC:** excellent cold hardiness, rapid growth rate, good alkaline tolerance, grows well in most soils
- GOLDEN CURRANT:** drought resistant, rapid growth rate, hardiness to cold
- NANKING CHERRY:** rapid growth rate, Fruit edible
- SUMAC:** excellent drought resistance, rapid growth rate

**DECIDUOUS TREES**

- AMERICAN LINDEN:** not drought tolerant, medium to large in size
- AMUR MAPLE:** small in size, attractive colored leaves
- BUR OAK:** excellent drought resistance, can live more than 200 years
- SIUXLAND COTTONWOOD:** large in size, greater drought and alkalinity tolerance

**CONIFERUOUS TREES**

- BLACK HILLS SPRUCE:** cold resistant, prefers well drained soil, drought and alkaline tolerant, native to the Black Hills region
- COLORADO BLUE SPRUCE:** slow growth rate, fair drought resistance, cone shape
- PONDEROSA PINE:** excellent drought resistance and cold hardiness, moderate growth rate, tolerates alkaline, long needles

**PERENNIALS**

- Blanket Flower:** 8-24" tall, yellow, orange and red in color, full sun.
- Rocky Mountain Penstemon:** 18-30" tall, purple/blue in color, full to part sun.
- Western Yarrow:** 12-40" tall, white in color, full to part sun.
- Wild Bergamot:** 12-40", pale purple to rose pink ink color, full to part sun.
- Smooth Aster:** 12-3", purple in color, full to part sun.

## 2024 CCCD Seedling Tree Order Form

**ALL PAYMENTS MUST ACCOMPANY ORDER FORM. INVENTORY CHANGES DAILY!!!  
LAST DAY TO ORDER IS APRIL 1, 2024. TREES WILL BE DELIVERED IN MAY.**

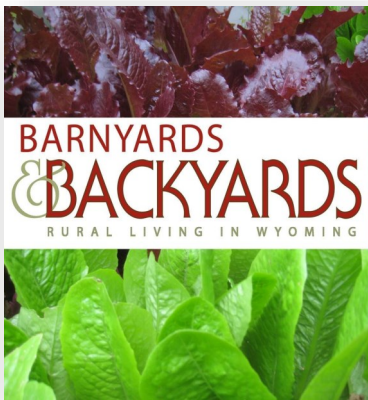
Bareroot Trees—lots of 25 only Height varies by species, all bareroot trees will be 6-15 inches or taller			
Species	# Lots	Cost/25	Total
<b>SHRUBS-</b>			
Caragana		\$35.00	
<del>Chokecherry</del>		<del>\$35.00</del>	
Common Lilac		\$38.00	
Golden Currant		\$44.00	
<del>Nanking Cherry</del>		<del>\$35.00</del>	
Skunkbush Sumac*		\$44.00	
<b>*10-24 inch</b>			
<b>DECIDUOUS-</b>			
American Linden		\$38.00	
<del>Amur Maple</del>		<del>\$38.00</del>	
Bur Oak		\$38.00	
Siouxland Cottonwood		\$38.00	
<b>CONIFERS-</b>			
Black Hills Spruce*		\$41.00	
<b>*6-15 inch Plug</b>			
Colorado Blue Spruce		\$30.00	
Ponderosa Pine		\$33.00	
<b>Method of Payment (CCCD use only)</b>			
Check #			
Cash			
Card Payment (Contact Us)			

Perennial Lots of 15 10 Cubic Inch “Containers”			
Species	# Lots	Cost/30	Total
Blanket Flower (Gaillardia aristata)		\$75.00	
Rocky Mtn. Penstemon (Penstemon eatonii)		\$75.00	
Western Yarrow (Achillea millefolium var. occidentalis)		\$75.00	
Bee Balm/Wild Bergamot (Mondarda fistulosa)		\$75.00	
Smooth Blue Aster (Symphyotrichum laeve)		\$75.00	
<b>Perennial Variety Package Lots of 35 Only 7 Cones of Each of the Species Listed on other Page</b>			
Perennial Variety Package		\$164.00	
Perennial Package*			
<b>*2 cones of each species</b>		\$72.00	
<b>Weed Barrier</b>			
6' x 300'		\$108.00	
Anchor Pins (box 500)		\$88.00	
<b>Total Before Tax</b>			\$
<b>Sales Tax 5%</b>			\$
<b>Total Amount Due</b>			\$

**Winter 2024 issue of Barnyards & Backgrounds magazine is out!!**

Dive into a treasure trove of valuable information with topics like:

- Grow your native plant knowledge with these resources:
- Find inspiration at demonstration gardens across Wyoming
- Minimize stress for migratory mule deer
- Keep your trees healthy by avoiding these common pitfalls
- Curious about cottontails?
- Use Zeedyk structures to restore meadows and floodplains
- When, where, and why to fertilize plants in Wyoming
- Is there such a think as weed prevention?



*Stop by our office to pick up a copy!*



**CCCD has the following items for sale!**

**Call (307) 682-1824 to reserve!**



**Yellow Mesh Protector**  
\$0.59 each plus tax

**Bamboo Stakes**  
\$0.14 each plus tax

**Anchor Pins**  
Bundle of 25  
\$2.00 each plus tax



## Campbell County Weed & Pest District

P.O. Box 191 \* Phone 307-682-4369 \* Fax 307-686-8167

Gillette, Wyoming 82717-0191

Grasshoppers may be a problem for some of Campbell County this year. Last summer we had high counts of grasshoppers in portions of Northern Campbell County. The worst of the areas were along the Montana border. Besides a couple of outliers grasshopper counts throughout the rest of the County were low or Average. The District will hold a meeting for the Northern landowners at Little Powder School on Feb 15 at 4.00 pm to see who would be interested in signing up for a program if grasshopper numbers are high this Spring. If you had a high Number of grasshoppers last Summer and cannot make the meeting, please contact the Office. Another thing to keep in mind is the Extension office will be holding an in person private applicator training for landowners who need to renew or receive an applicators license. The meeting will be held Feb 29-Gillette, Noon to 4pm at the George Amos Memorial Building. You must be present for entirety of program to receive license. Please bring a photo ID and be prepared to take a brief quiz upon completion of the program.

If you have any questions call the Campbell County Weed and Pest @ 682-4369.



## WELL WATER TESTING DAY

FOR CITIZENS WITHIN THE CAMPBELL COUNTY CONSERVATION  
DISTRICT

MUST PROVIDE DOCUMENTATION OF COUNTY RESIDENCY

**1**

PICK-UP A SAMPLE KIT (WHILE  
SUPPLIES LAST) AT OUR OFFICE

**2**

MARCH 20TH  
FILL KITS AND DROP-OFF TO CCCD  
BETWEEN 9 A.M. - 12 P.M.

**3**

ENERGY LABS WILL PROCESS THE  
SAMPLES AND CCCD WILL SEND YOU  
YOUR RESULTS

**ANY QUESTIONS CONTACT OUR OFFICE AT 307-682-1824 OR [CLOVE.CCCD@GMAIL.COM](mailto:CLOVE.CCCD@GMAIL.COM)**

*Results may be public records under the Wyoming Public Records Act, W.S. § 16-4-201 et seq., and may be subject to public disclosure pursuant to this Act, unless a specific exception applies which limits or prohibits disclosure.*



# *Virtual Workshop*

## Defending and Growing the Core by Breaking the Cycle of Annual Grass Invasion

**Date:** April 3, 2024  
**Time:** 9:00am - 4:00pm Mountain Time  
**Format:** Online via Zoom  
**Registration:** Free and open to all

[Click Here to Register!](#)



Invasive annual grasses—such as cheatgrass, medusahead, and ventenata—are the leading cause of degradation and loss of America’s sagebrush grasslands, reducing forage and habitat, fueling more frequent and larger wildfires, and threatening rural economies. While invasive grasses are widespread, there remains a generational opportunity to proactively address this threat. However, many land managers may not be equipped with the information needed to plan and implement effective treatments.

In this one-day virtual workshop, participants will learn about guiding principles, strategic planning processes, tools, and tactics for managing annual grass invasion in sagebrush country. Participants will be introduced to the proactive “defend and grow the core” management philosophy, which emphasizes protecting intact and functioning native plant communities, and expanding them through improved management techniques, rather than initially starting with the most degraded areas. This workshop seeks to inspire participants and start conversations across the sagebrush biome on how to meet the invasive annual grass problem head on in their own watersheds. We hope this information will be especially useful to any land manager, landowner, or conservation practitioner working to conserve and protect the sagebrush biome.

### Agenda Topics

- **Why now?**
  - Background and urgency of the problem
- **Biology and ecology:** What you need to do to break the invasion process.
- **Landscape planning**
  - Guiding strategies for proactive management
  - How to pick the best places to work at a landscape scale
- **Project-Scale planning**
  - What to do in the best places
  - Effective tools and tactics
- **Call to action**
  - Steps to get you started
  - Resources available to support you

### Have questions about the workshop?

Please contact,  
 Claire Visconti (Outreach Program Coordinator), at [cviscont@uwyo.edu](mailto:cviscont@uwyo.edu)



**For more information, visit our website**  
[invasivegrasses.com](http://invasivegrasses.com)

## **ENVIRONMENTAL STEWARDSHIP RECOGNIZED**

This year, S&W Livestock, LLC is honored as the 2024 Wyoming Stock Growers Association (WSGA) Environmental Stewardship Award winner.

WSGA, the Wyoming Department of Agriculture, the Wyoming Game and Fish Department and Audubon Rockies are proud sponsors of this prestigious award.

“Over the 27-year history of WSGA’s Environmental Stewardship Program, the consistent message has been the passionate commitment to resource stewardship exemplified by the honorees. At the same time, as demonstrated by this year’s nominee, S&W Livestock, LLC, these successful ranches have each evolved in their own unique manner,” stated Jim Magagna, WSGA executive vice president.

### ***From the beginning***

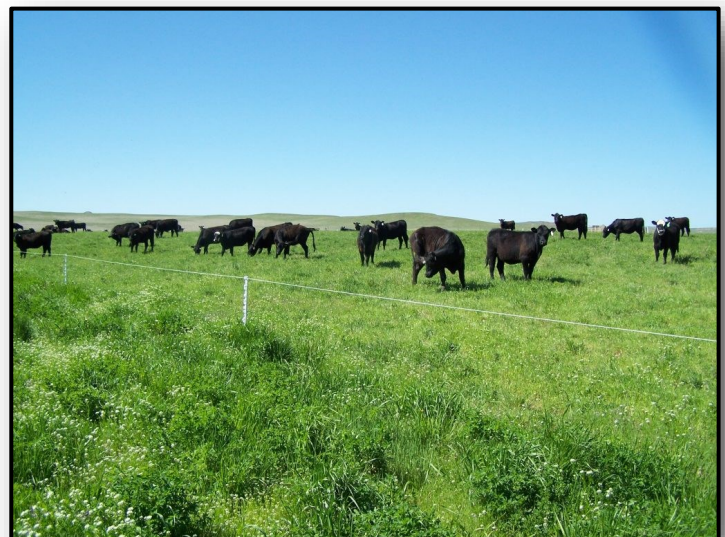
University of Wyoming (UW) Professor of Plant Sciences and Director of the Sheridan Research and Extension Center Brian Mealor described S&W Livestock’s story as one of innovation, flexibility and foresight, not just with livestock or natural resources but also with succession planning and partnerships.

“Don Spellman came back to his family’s ranch near Spotted Horse in 1983 and participated part time in the operation while still working off site. Then, he bought the horse camp property before retiring in 1991 to ranch full time,” Mealor stated. “Don and his wife Kathy spent their winters in Arizona, but to maintain a presence at the ranch, they hired Lindsay (Wood) Taylor to provide ranch labor and assistance.”

Shortly after, Taylor took a leap of faith and resigned from her position with the UW Extension Office to expand her herd, which she began two years earlier, to take a full-time position at the ranch.

Taylor later married Dan Wood in 2011, and in 2013, the Spellmans and the Woods joined forces to establish S&W Livestock, LLC.

“The families have come together to form and grow the operation and are well-respected community members who are actively engaged in their community,” Mealor added. “The S&W Livestock story is very interesting because it is a family-type operation comprised of different families willing to develop a strong partnership to benefit their operations and the land they steward for themselves and the greater good. It is a story of innovation, experimentation, trust and good old-fashioned hard work.”



## *Stewardship practices*

According to Mealor, S&W Livestock, LLC participates in educational events and programs focusing on soil health, rangeland monitoring, invasive weed management and alternative forage systems.

“They acquired grant funding to evaluate multiple methods for managing bulbous bluegrass and were early adopters battling the spread of *ventenata* in Campbell County,” Mealor described. “They have experimented with cover crop mixes for soil health and shoulder-season forages, evaluated deep-pot tree plantings to restore riparian areas and partnered with UW on a native plant initiative.”

S&W Livestock, LLC has had a long history of working with the Gillette Natural Resources Conservation Service (NRCS) on projects to improve their land and have invested in water development projects over the years, which has led to more than 33 miles of water pipelines connecting seven wells to 46 livestock watering tanks.

Mealor also mentioned, “Along with water developments, S&W Livestock, LLC has made significant enhancements to improve livestock distribution and flexibility, largely in the form of 36-plus miles of wildlife-friendly electric fencing which divides their grazing lands into more than 50 pastures.

NRCS District Conservationist Tim Kellogg has been working with the ranch since 2006 on numerous projects, including the local sage grouse project and extending existing pipelines to improve the overall range health of the ranch.

“We are currently working with them on an annual invasive grass control, cover crops and fence replacement program for improved big game movement,” Kellogg mentioned. “They now have over 52 permeant pastures they further divide with temporary electric fencing.”

He added, “With Lindsay’s background in animal science, they made several changes to their herd and how they handled their livestock. The biggest changes affecting the natural resources of the ranch were reducing the average size of their cattle, moving their calving dates to late spring and developing an intensive grazing system.”

S&W Livestock, LLC is committed to stewardship and sustainability through its work and partnership with many different conservation organizations.

Being early adopters of regenerative grazing approaches, they have always been ahead of the curve and continue demonstrating their management techniques can build soil, sequester carbon, reduce water runoff and create ecosystems more resilient to drought.

“S&W Livestock, LLC has shown a commitment to conservation in three primary ways – habitat management, animal welfare and husbandry and environmental sustainability,” stated Audubon Rockies Conservation Ranching Director Dusty Downey.

*Melissa Anderson is the editor of the Wyoming Livestock Roundup. Send comments on this article to [roundup@wylr.net](mailto:roundup@wylr.net).*

Campbell County Conservation District  
601 4J Court, Suite D  
P.O. Box 2577  
Gillette, WY 82717 - 2577



NP MKT ML  
PERMIT NO. 70  
Gillette, WY 82716

Phone: (307) 682-1824 Fax: (307) 682-3813 E-Mail: [clove.cccd@gmail.com](mailto:clove.cccd@gmail.com)

RETURN SERVICE REQUESTED

The Campbell County Conservation District is seeking volunteers for the Black Hills Natural Resource Youth Camp (BHNRYC). The Black Hills Natural Resource Youth Camp is cooperatively hosted by the Campbell County Conservation District and Weston County Natural Resource District. BHNRYC will be held June 5-7, 2024 at the Mallo Camp facility located in the Black Hills of Weston County for 9-13 year olds. This camp provides the youth of Wyoming with an opportunity to learn about natural resources and careers in related fields in an outdoor classroom setting. The camp focuses on hands on lessons designed to explore soil, water, plants, animals, air, and human influences on the environment. Volunteers will receive a mandatory background check that is to be completed by the end of March. If you are interested in volunteering at the BHNRYC please contact Crystal Kellebrew, Camp Director with the CCCD at (307) 682-1824 or [kellebrew.cccd@gmail.com](mailto:kellebrew.cccd@gmail.com).

